

# Connected Infrastructure - Cambridge

## Traffic Control

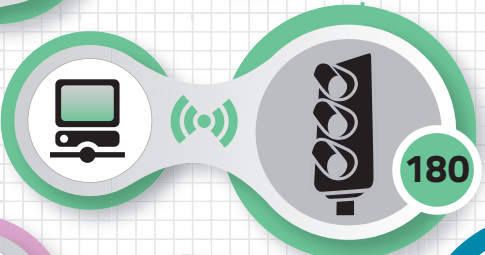
### UTC (Urban Traffic Control)

UTC lights 40  
Comm's Mesh Network  
Backhaul 12 Locations CPSN



### Traffic lights (stand alone)

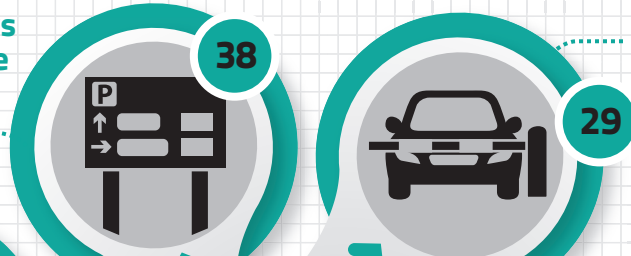
No. of lights 180  
Comm's GPRS



## Integrated Highways Management Centre

### Parking guidance and Traffic Management

No of Signs 38  
Comm's Radio Link



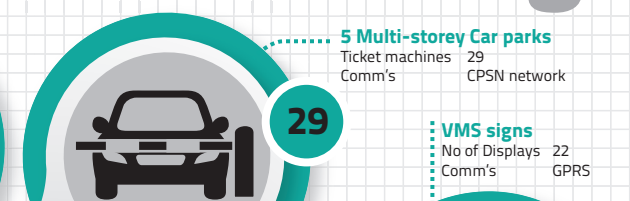
### CCTV link to IHMC

CCTV cameras 12  
Comm's GPRS  
Backhaul n/a



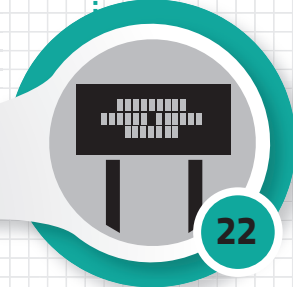
### 5 Multi-storey Car parks

Ticket machines 29  
Comm's CPSN network



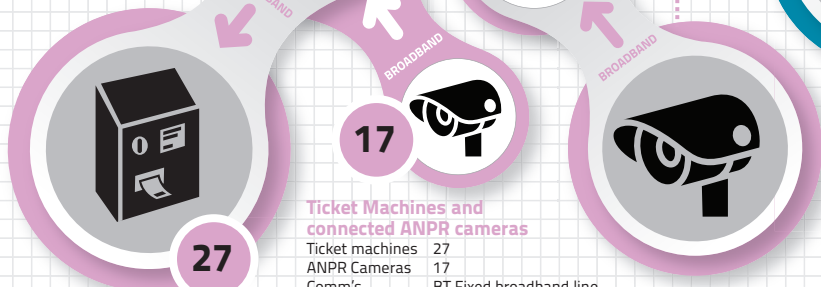
### VMS signs

No of Displays 22  
Comm's GPRS



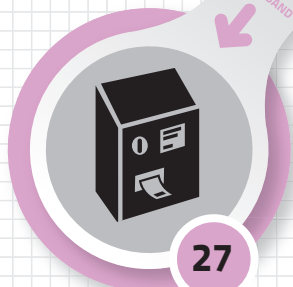
## Park and Ride

5 sites



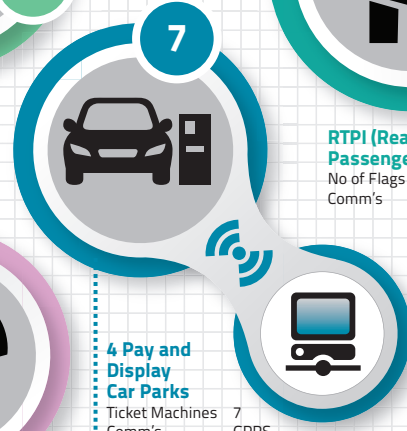
### Ticket Machines and connected ANPR cameras

Ticket machines 27  
ANPR Cameras 17  
Comm's BT Fixed broadband line  
Backhaul Not Known



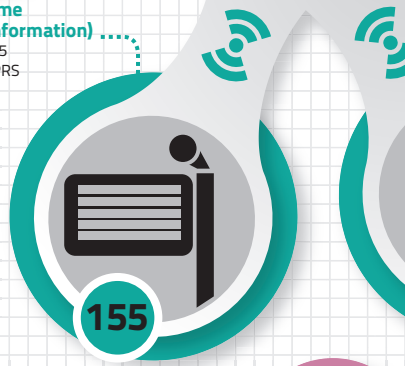
### 4 Pay and Display Car Parks

Ticket Machines 7  
Comm's GPRS



### RTPI (Real Time Passenger information)

No of Flags 155  
Comm's GPRS



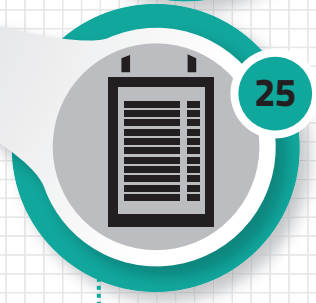
### Buses

Comm's GPRS



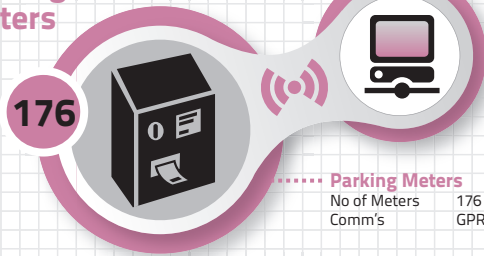
### TFT Screens

No of Screens 25  
Comm's ADSL



## Parking Meters

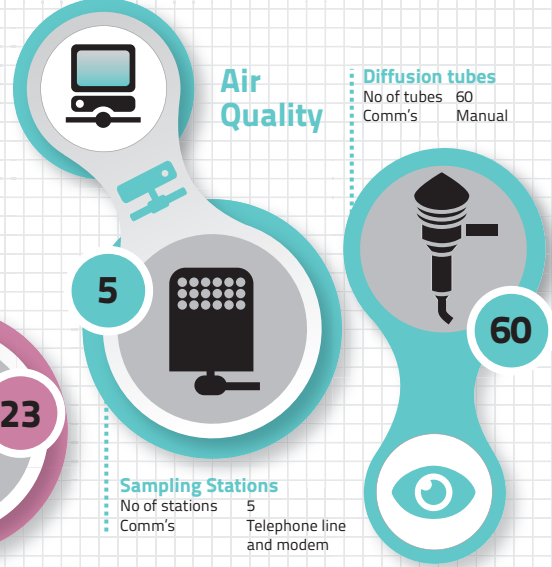
176



### Parking Meters

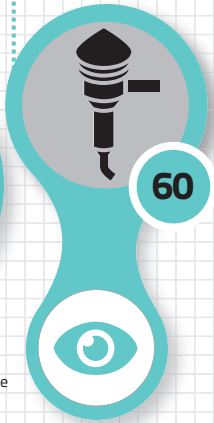
No of Meters 176  
Comm's GPRS

## Air Quality



### Diffusion tubes

No of tubes 60  
Comm's Manual

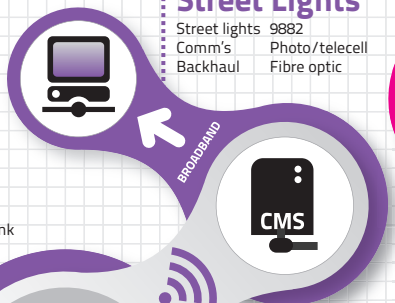


### Sampling Stations

No of stations 5  
Comm's Telephone line and modem

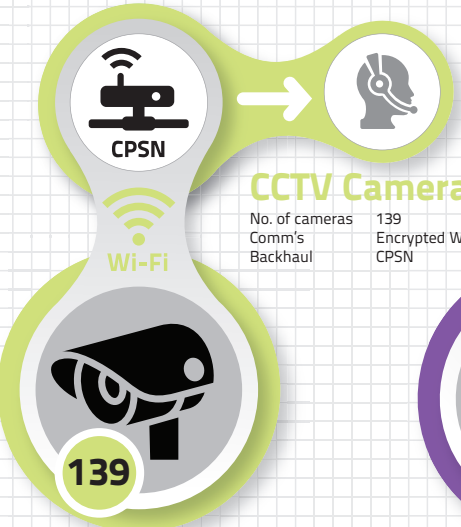
## Street Lights

Street lights 9882  
Comm's Photo/teleccl  
Backhaul Fibre optic



## CCTV Cameras

No. of cameras 139  
Comm's Encrypted WiFi link  
Backhaul CPSN



## Big Belly Bins

No of bins 6  
Comm's Wi-Fi



### Handheld Meters

No of Handhelds 23  
Method of Comms GPRS

